



# ELECTRONIC DELIVERABLES FOR KYTC






# TOPICS

- Submittal of Plans
- Project Development Memo 01-10
- Future of KYTC Plan Submittals



# SUBMITTAL OF PLANS


- Process for Plan Submittal
  - Importance of the Index Files
  - Request for InRoads Data
- 

# FINAL CONTRACT PLANS SUBMITTAL DOCUMENTS

- Final contract plans plotted on mylar and signed by the project manager as the legally binding set
- Electronic Files (representing the contract plan and proposal – delivered via ProjectWise)
  - DGNs
  - PDF 22" x 36"
- Supplemental Electronic Files (as required by the CADD Standards for Highway Plans – delivered via ProjectWise)
- Completed plans submittal form (TC61-10 for federal funded projects – TC61-11 for state funded projects)




# FINAL CONTRACT PLANS SUBMITTAL DOCUMENTS

- Electronic Files Checklist (Form TC61-10I available on the Highway Design Web Page in the CADD Standards Section)
  - Final Estimate
  - CAP report (even when there are no entries in the CAP)
  - Project construction schedule (fixed completion date or maximum work days)
- 



# FINAL CONTRACT PLANS SUBMITTAL DOCUMENTS

- BMP/NOI Documents
  - Permit/Water Quality Certification
  - Utility Impact Notes
  - Special provisions for protection of railroad interest
  - List of project-specific special notes or specifications
  - List of plans required to make up the Final Contract Plan Set
    - Roadway Plans
    - Structure Plans
    - Traffic Signing Plans
    - Traffic Signal Plans
    - Traffic Lighting Plans
- 

# PLAN PROCESSING WEB SITE

[http://transportation.ky.gov/design/plan\\_processing/plan\\_processing.html](http://transportation.ky.gov/design/plan_processing/plan_processing.html)



Search KYTC

Submit

KYTC HOME

INSIDE THE CABINET

Highway Design - Plan Processing

## Highway Design

Sections

- [Drainage](#)
- [Pavement Design](#)
- [Plan Processing](#)
- [Public Meetings](#)
- [Signing](#)
- [Survey Coordination](#)
- [Quality Assurance](#)

Get Information on:

- [CADD Standards](#)
- [Standard Drawings](#)
- [Design Policy](#)
- [Design Memos](#)
- [Bid Codes](#)
- [Software/Support](#)
- [Training Opportunities](#)



## Plan Processing



Plan Processing, a Branch in the Division of Highway Design, works with Design Consultants, District Design offices and other Divisions within the Transportation Cabinet, checking bid items and codes, standard drawings, receiving and attaching Utility plans, checking notes and specifications and assuring that plan sets meet the latest standards as set out in the Standard Specifications for Road and Bridge Construction as well as Design Memorandums. The Plan Processing Staff is available to assist District Offices and Design Consultants with any issues regarding the procedures for plan submittals to Construction Procurement.

Plan Processing Staff:

[Bill Greene](#)- Branch Manager  
[Jeff Lal](#)  
[Dee McElmurray](#)  
[Brad Poole](#)  
[Gary Walters](#)

### PLAN PROCESSING GUIDANCE

[2010 Check Print & Plan Submittal Schedule](#)

[2009 Check Print & Plan Submittal Schedule](#)

[Plan Development Checklist](#)

[Plan Review Checklist](#)

\*Please review these items prior to submitting check prints or plans.

[KYTC Project Development Checklist](#)

[Contract Plan submittal Checklist](#)

[Fuel Adjustment Spreadsheet](#) **October 08 - Forward**  
(Revised August 24, 2009)

\*Use this spreadsheet to determine the quantities for the Fuel Adjustment Bid Items established by Design Memorandum 1-06. Spreadsheet updated to provide 0 balances for amounts under the threshold balances.

[Contractor QAS Suspension Memo](#)

\*Contractor QAS Special Note 11A suspended effective August 6, 2007

[Check Print Submittal Documents](#)

\*Documents and information to be included with the Check Print Submittal

[Final Contract Plans Submittal Documents](#) \*Documents and information to be included with the Final Contract Plan Submittal

### LINKS OF INTEREST:

[Highway Design Memorandums](#)

[Sepia List](#)

[Geotechnical Reports](#)

[Construction Procurement](#)


[2008 Special Notes and Provisions](#)

[General Notes](#)

[Updated March 2, 2010](#)




# PROJECT DEVELOPMENT MEMO 01-10

- Memo Highlights
  - PDF Needs to match the Mylar Plan set
  - Creating the PDF's
  - Creating PDF's using custom macros
- 





# MEMO HIGHLIGHTS

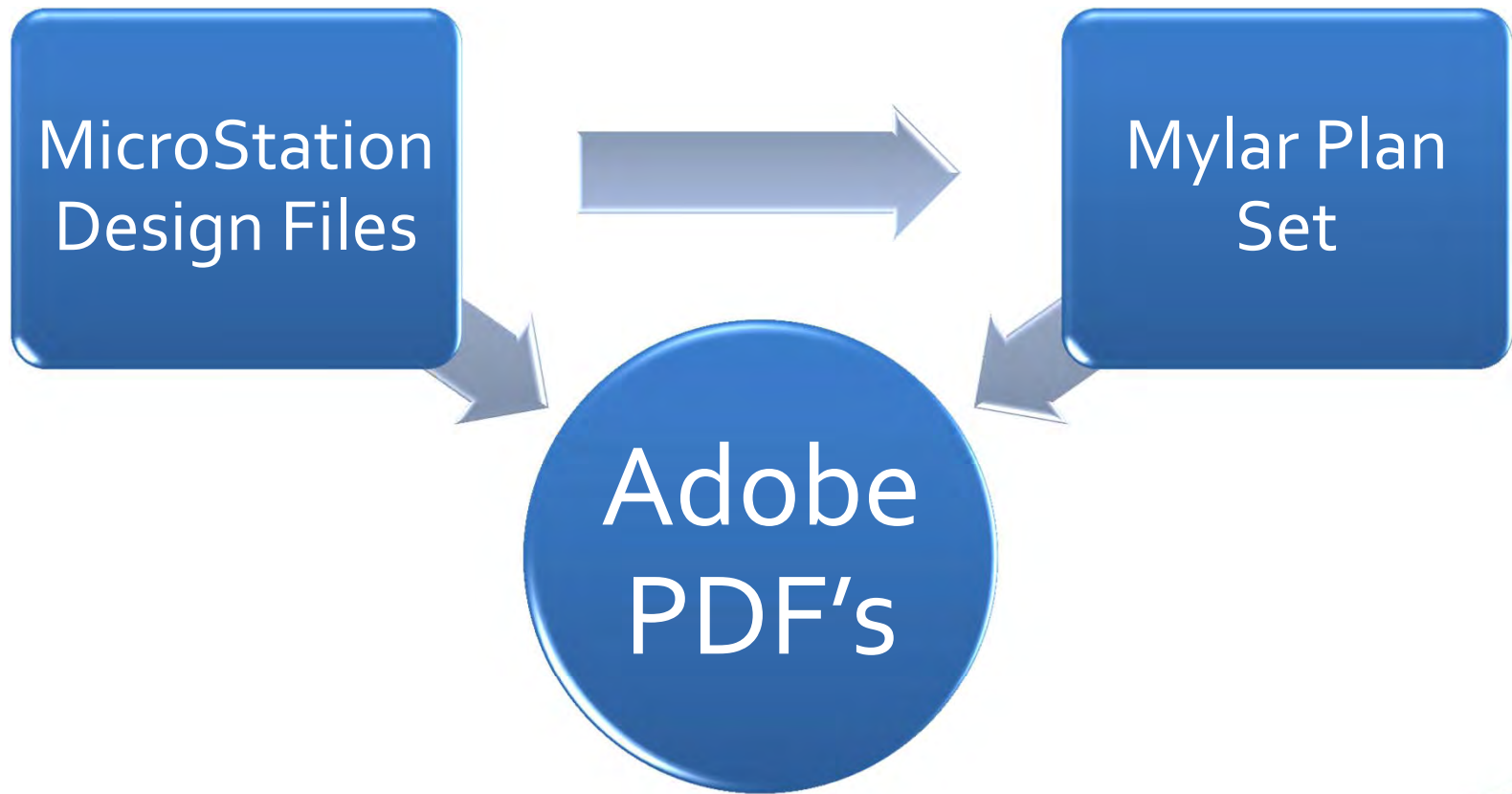
- Graphical Scale required on all sheets.
  - Contract plan sets shall also contain PDF files for each section (RSTUX) of the plan set.
  - ALG and DTM files shall be in the current version of InRoads.
- 



# MEMO HIGHLIGHTS

- Department's Surveying Standards requires the use Kentucky Single Zone on projects in lieu of Kentucky North or South Zone.
- Existing Features shall adhere to the survey codes accepted by the Department.

# ADOBE PDF'S



# CREATING ADOBE PDF'S

- Print Organizer from MicroStation  
V08.11.07.180 or higher

- KYTC\_PDF.pltcfp
- KYTCPrintStyle.dgnlib
- PrintStyle eSheet

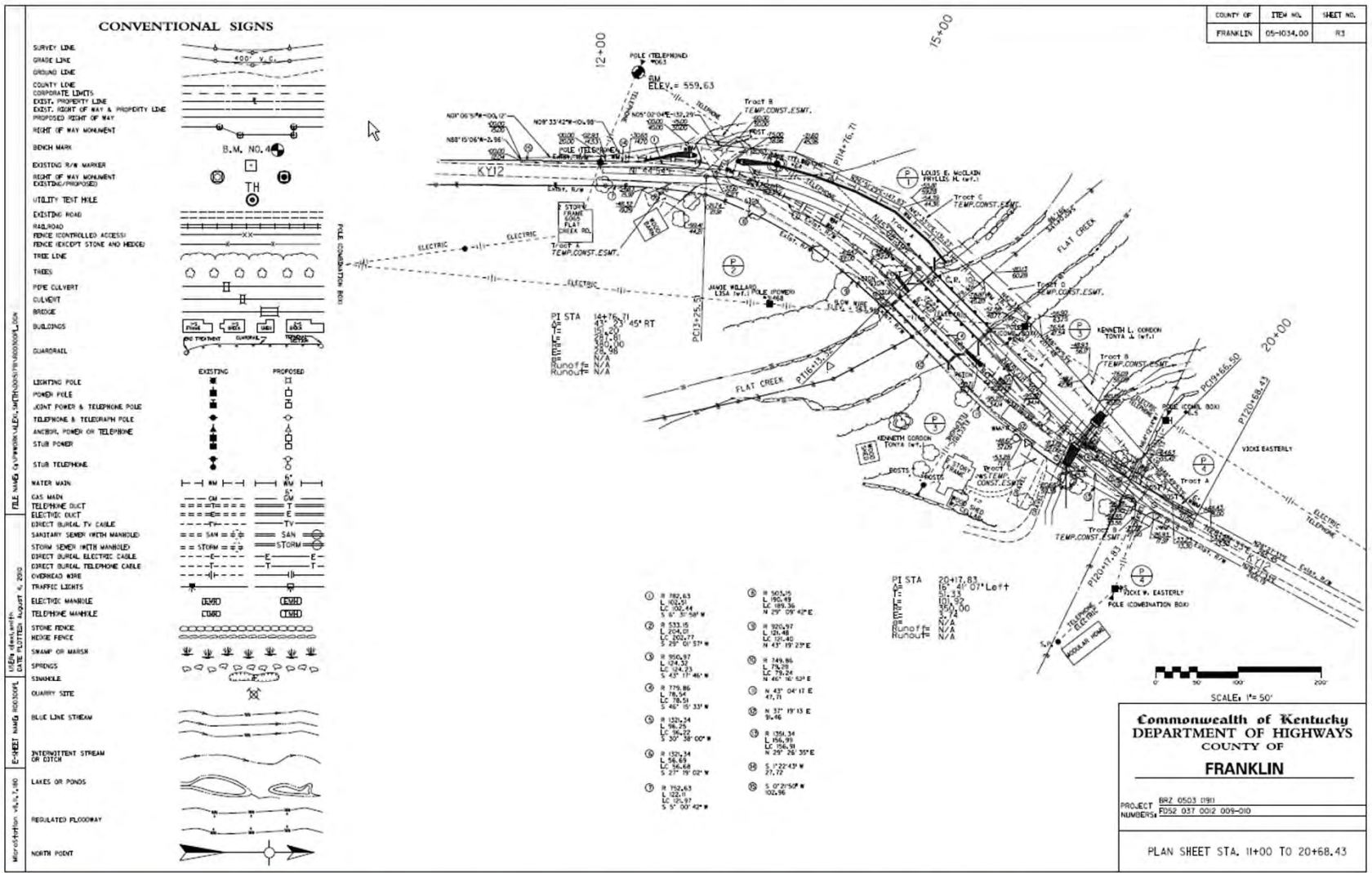


# CUSTOM MACROS

- PrepXS – Prepares Cross Sections for creating the PDF
- eSheet – Creates cut sheets, Index file and PDF's



# PDF OF PLAN SHEET



SCALE: 1" = 50'

**Commonwealth of Kentucky  
DEPARTMENT OF HIGHWAYS  
COUNTY OF  
FRANKLIN**

---

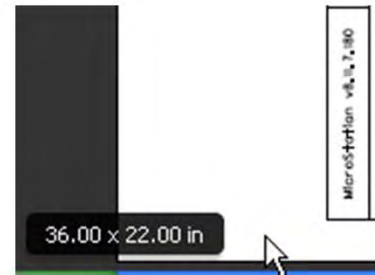
PROJECT BR2 0503 1981  
 NUMBER# PD52 037 002 009-010

---

PLAN SHEET STA. 11+00 TO 20+68.43

# KEY THING TO LOOK FOR

USER: alexl.smith DATE PLOTTED: August 4, 2010	DIR OVE TR/ ELE TEL ST HEC SW/ SPF SIN
E-SHEET NAME: R00300PL	OU/ BLI
	INT OR




SCALE: 1"= 50'

**Commonwealth of Kentucky**

**MS\_PLT\_UPDATE\_FIELDS =2**



# FUTURE OF KYTC PLAN SUBMITTALS

- Digital Signatures/Seals
  - PDF vs. DGN
  - Positives
    - Cost Savings-No Mylar
    - Quicker Submittals
    - Easier Storage
    - Better Security
- 





**B. DAVID COX**

Executive Director

KY State Board of Licensure for  
Professional Engineers & Land Surveyors





# QUESTIONS

